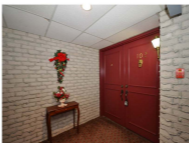




TYPE: Apartment Condo
AGE: 33 Years
TAXES: \$2,569 (2015)
CONDO FEES: \$530.13
POSSESSION: 15 Days (Flex)
INCLUDES: Exterior & Ground Maintenance, Water, Insurance, Management & Recreation Facilities
PROPERTY MANAGER:
NPM, 519-439-2227
HEAT/COOL/ELECTRIC: Electric Heat Pump & Central Air.
BEDROOMS: 2+1
BATHROOMS: 2+1
PARKING: 1 Car Underground
INCLUSIONS: Dishwasher, Fridge, Stove, Washer & Dryer, OTR Microwave & Window Coverings



693 Windermere Cres. Unit 102

\$189,900 MLS 578062

Spacious 1,700 sq. ft. corner unit with south and west facing private patios on main floor in exclusive north end location next door to Thames walking trails, close to Western, University Hospital, city bus, off leash dog park & Masonville Mall. Ample visitor parking. Guest suite only \$75 per night plus party room. Open concept living and dining rooms plus separate den with French doors (could be 3rd bedroom). Eat-in kitchen with 4 appliances. Access to patios from living/dining room, den & master. New carpet throughout. Mostly freshly painted. Large walk-in closet & full ensuite of master. Note, this condo has powder room plus a bath for each bedroom! Great laundry room with stackables.

FOR MORE INFO SEE: www.homesforsaleinlondon.com



Joyce Byrne

Broker

519-471-8888

joyce@homesforsaleinlondon.com



Sutton Group Preferred Realty
London ON, Canada (519) 471-8888

